

Classic Log Homes, Inc.

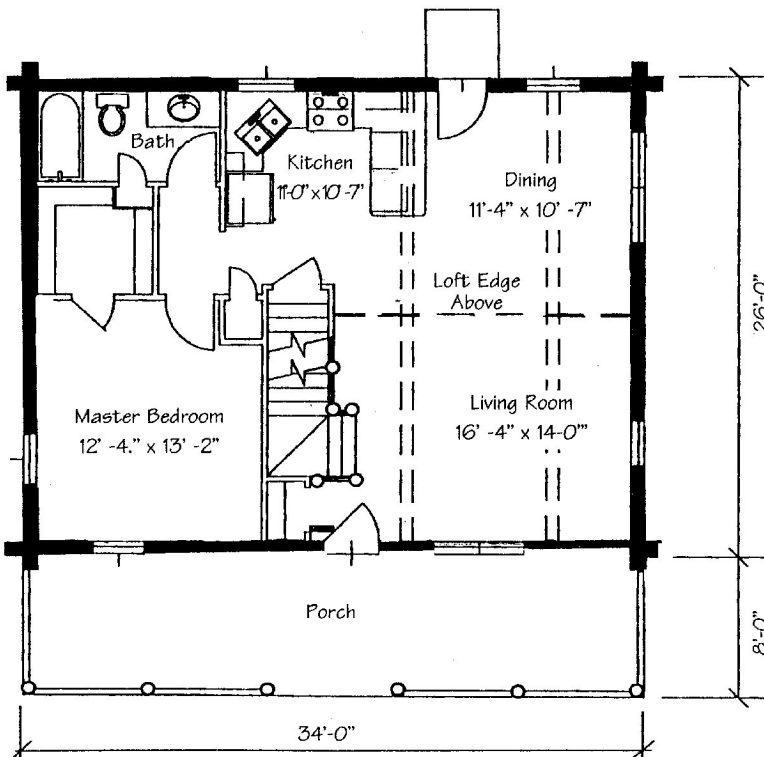
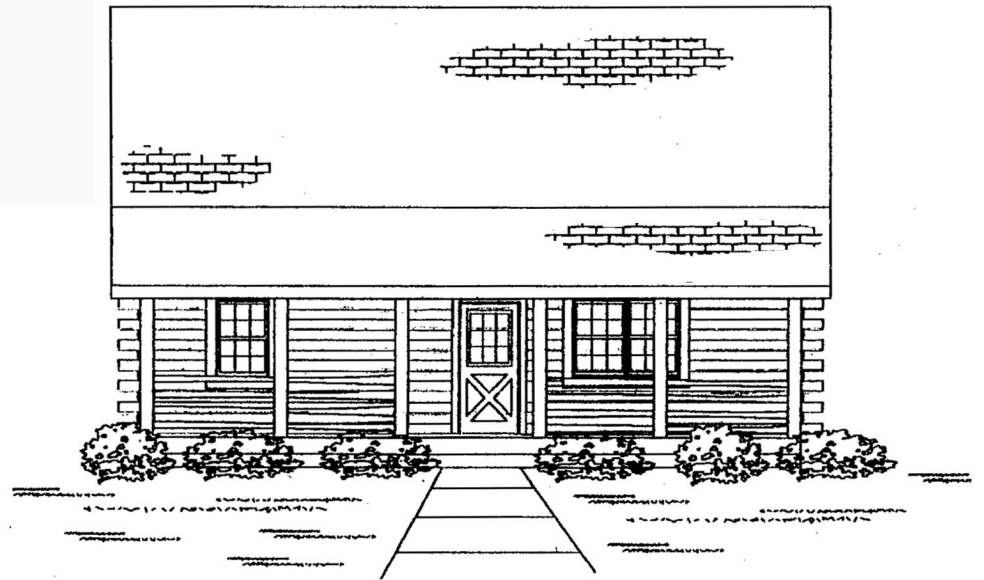
Showroom / Model

845 Highway 73 South

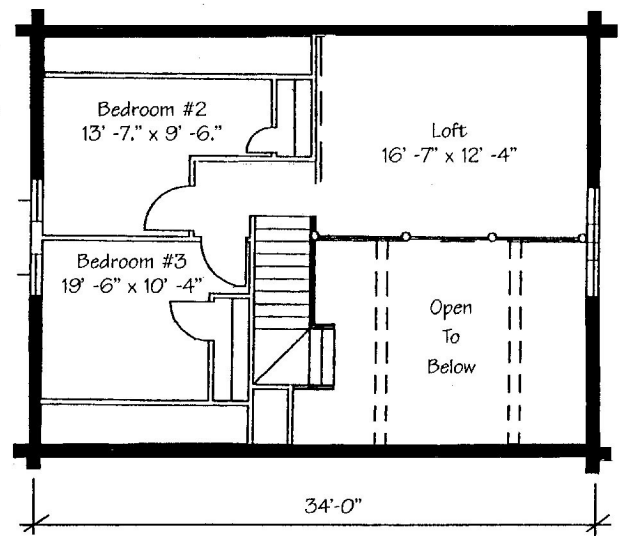
Wisconsin Rapids, WI 54494

Office / Cell: 715-887-2550

www.classicloghomes.biz



MAIN



LOFT

LOFTED 26'X34'
MAIN FLOOR: 884 SQ. FT.
LOFT: 533 SQ. FT.
TOTAL FLOOR: 1,417 SQ. FT.

3 BEDROOMS
1 BATHROOM
8' X 34' COVERED PORCH